

# HELSINKI NEW LIBRARY



New Helsinki Library at night looking from the Green Park onto the big open transparent volume. Revealing the life inside the library.

PROJECT:  
**Helsinki National Library**

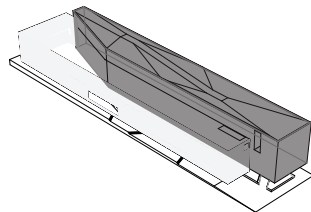
TYPE:  
**Library & cultural activities**

CLIENT:  
**Open Int. competition**

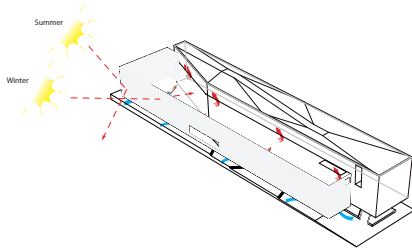
LOCATION:  
**Helsinki, Finland**

SCALE:  
**Construction area: 15.500 m<sup>2</sup>**

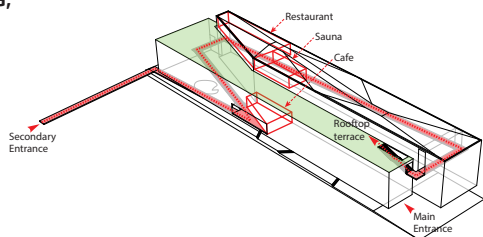
PROGRAM:  
**Library, Event spaces, Cafe, Restaurant, Public Sauna, Bookstore**



OPEN & CLOSED VOLUME COMPOSITION



PASSIVE HEATING & NATURAL VENTILATION



CONNECTING RAMP OF THE PUBLIC FUNCTIONS

The building site for the New Helsinki Library (NHL) has a narrow rectangle shape. Stretching about 150 meters from north to south. Situated in the heart of Helsinki, with the main cultural institutions as its closest neighbors. The city to the south and the open Green Park and waterfront shore to the north. In this specific location, each side of the competition site faces a different type of urban typology, and, therefore, NHL has to provide different architectural answers so that it can integrate itself into the urban fabric.

This long sloping landscape is the foundation of the design concept for the new library. A long and shallow ramp connects and leads one from the main plaza to the library's public functions. The shallow ramp turns into a bridge spanning across the inside of the library leading one to the west facade where another shallow ramp takes one to the library's green roof top, framing the neighboring cultural buildings along the way.

The architectural volume of the library is composed of two floating and interlocked volumes, stretching almost the entire length of the site. The two volumes contrast each other in materiality, sensuality and purpose regarding the library itself, but they interlock not only in form but also in function.

NHL defines different city spaces due to its composition and immediate neighbours. At day time, the west facade appears like a floating white fabric volume, and at night, the louvred facade vanishes in the light coming from inside the library, exposing the activities, circulation and life inside to the plaza, and marking its cultural purpose in the city of Helsinki.